



# INTERAGENCY NEWS RELEASE

<http://wildlandfire.az.gov>

FOR IMMEDIATE RELEASE

## Fire activity and dry conditions trigger fire restrictions in portions of Western, Central, and Northern Arizona

Phoenix, Ariz. (May 2, 2022) – Effective Thursday, May 5 the following agencies will implement campfire and smoking restrictions:

- Bureau of Land Management (BLM) Phoenix and Colorado River Districts;
- Coconino, Kaibab [Williams and Tusayan Ranger Districts], Prescott, Tonto, and Apache-Sitgreaves National Forests;
- Arizona Department of Forestry and Fire Management as it relates to state trust lands in Coconino County south of the Grand Canyon, Mohave, La Paz, Yavapai, Yuma, Maricopa, Gila, Graham, Greenlee, Apache, and Navajo counties.

### **Beginning May 5, 2022, and until rescinded, the following are prohibited:**

- Building, maintaining, attending, or using a fire, campfire, charcoal, coal, or wood stove fire, except within a developed recreation site, or improved site.
- Smoking, except within an enclosed vehicle or building. Smoking is prohibited in all federal buildings.

In addition, the BLM Phoenix and Colorado River Districts, Prescott and Tonto National Forests will implement the following restriction, which **temporarily prohibits recreational target shooting**:

- Discharging a firearm, air rifle or gas gun, except while engaged in a lawful hunt pursuant to state, federal, or tribal law, and regulations.

**Fireworks and exploding targets are never allowed on federal and state trust lands.** Recreational target shooting is prohibited year-round on state trust lands.

Pressurized liquid or gas stoves, lanterns and heaters possessing shut-off devices are allowed. When using a portable stove, make sure the area is clear of grasses and other fine fuels. Prevent stoves from tipping and starting a fire.

Residents and visitors should check with respective county and municipal governments for information on fire restrictions in those jurisdictions.

National Park Service and U.S. Fish and Wildlife Service units across Arizona maintain similar fire restrictions as those being implemented, year-round. Variations are possible, and visitors should check with the unit's visitor center for area-specific restrictions and regulations.

Violation of restrictions is punishable by fine, imprisonment or both. Violators may also be held personally responsible for reimbursement of fire suppression costs.

To prevent wildfires, never throw cigarettes out of a vehicle window. Use an ashtray instead. Never park a vehicle over dry grass as the catalytic converter can ignite the vegetation. Make sure your vehicle is in good operating condition, tires are well inflated, and check for any dragging metal or chains from towed trailers.

Fire conditions as well as localized closures and restrictions are subject to change. Tribal, federal, state, and local mandates are different, they may have some differences in their restriction notices. For a more detailed explanation concerning agency restrictions and fire information in general, please contact the nearest land management agency office where you plan to work or play or visit <http://wildlandfire.az.gov>.

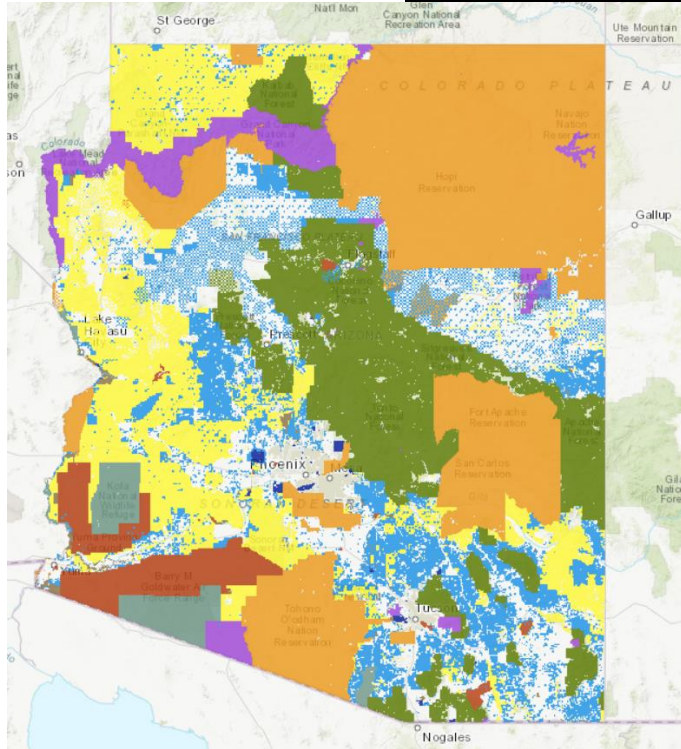
-end-

## Additional Useful Links/Resources:

Fire Restrictions Map for Arizona and New Mexico: <https://wildlandfire.az.gov/fire-restrictions>

Use this [Interactive Map](http://gis.azland.gov/webapps/parcel/?loc=-110.4847,34.5775,7&layers=3,1,0) to help determine who manages the lands where you plan to recreate.  
[<http://gis.azland.gov/webapps/parcel/?loc=-110.4847,34.5775,7&layers=3,1,0>]

### Links to Agency Contacts (active hyperlinks):



- [Arizona National Forests](#) - [Green]
- [Bureau of Land Management - Arizona](#) -[Yellow]
- [Arizona National Parks](#) - [Purple]
- [Bureau of Indian Affairs -Western Region](#) - [Orange]
- [Tribal Partners](#)
- [Arizona Wildlife Refuges](#) - [Sage]
- [Arizona Department of Forestry & Fire Management](#) - [Blue]
- [Arizona State Land Trust](#) - [Blue]
- [Arizona State Parks](#) - [Blue]